



# CAPPINGS

The Official Newsletter of the  
Kansas Honey Producers Association  
[www.KansasHoneyProducers.org](http://www.KansasHoneyProducers.org)



Promoting Mankind's Most Beneficial Insect - The Honey Bee

January 2011

## KHPA OFFICERS

### President

Steve Tipton  
785-484-3710

[bstbees@embarqmail.com](mailto:bstbees@embarqmail.com)

### 1<sup>st</sup> Vice President

Joli Winer  
913-593-3851

[joli@heartlandhoney.com](mailto:joli@heartlandhoney.com)

### 2<sup>nd</sup> Vice President

Rocky Schmied  
316-684-0990

[honey@oakschmied.com](mailto:honey@oakschmied.com)

### 3<sup>rd</sup> Vice President

Connie Hopkins  
620-214-0644

[cmhopkins@wbsnet.org](mailto:cmhopkins@wbsnet.org)

### 4<sup>th</sup> Vice President

Becky Tipton  
785-484-3710

[bstbees@embarqmail.com](mailto:bstbees@embarqmail.com)

### Secretary

Mary Coppinger  
913-774-4810

[copphoney@yahoo.com](mailto:copphoney@yahoo.com)

### Treasurer

Robert Burns

913-831-6096 [rburns@kc.rr.com](mailto:rburns@kc.rr.com)

### Area Directors

**NE** Michael Sinclair 913-367-1257

[sinclairhoney@hotmail.com](mailto:sinclairhoney@hotmail.com)

**SE** Tim Tucker 620-879-2926 [tucker@hit.net](mailto:tucker@hit.net)

**NC** Tom Johnson 785-263-7058

**SC** Jim Rowan 620-478-2002

[honeybee@haviglandtelco.com](mailto:honeybee@haviglandtelco.com)

**NW** Greg Swob 785-623-3533

[swob@eaglecom.net](mailto:swob@eaglecom.net)

**SW** Ron Hopkins 620-214-0644

[rhopkins@wbsnet.com](mailto:rhopkins@wbsnet.com)

## Beekeeper of the Year 2010

At the fall meeting the *Beekeeper of the Year Award* was presented to Robert Burns. Robert is the glue that holds the club together. He volunteers each year at the State Fair. Any time he is asked to make a presentation he does. He has a true volunteer spirit and this award was certainly deserved! It is an honor to work with him, congratulations Bob!

## Kansas Honey Producers Meeting Friday & Saturday, March 4 & 5 2011 Holiday Inn Holidome, Topeka KS

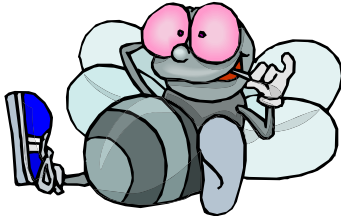
- **Guest speaker: Jamie Ellis PhD** who is an Assistant Professor of Entomology at the University of Florida in Gainesville
- Various speakers from the State of Kansas
- Various club members as guest speakers
- Make Room reservations by February 2<sup>nd</sup>
- Honey & Cherries Cooking Contest
- A great program is planned
- Get your registration forms in soon—come to the dinner and lunches

### Upcoming Events:

- ❖ Mark your calendars for the next KHPA meeting in Great Bend, October 21 & 22, 2011
- ❖ June 4<sup>th</sup>, Sat. Northeast Kansas Beekeepers Funday, Guests Dewey Caron & Chip Taylor, Lawrence KS Douglas Co. Fairgrounds
- ❖ Beekeeping Class, Overland Park KS Saturday, March 19<sup>th</sup>
- ❖ Queen Rearing Class, June 23=25 University of Nebraska
- ❖ Kansas State Fair, September 9-18<sup>th</sup>—mark your calendar to volunteer

Find us on Facebook search for  
Kansas Honey Producers

Volunteers needed to be Cappings Editor & website  
webmaster Contact Steve Tinton if interested



## Greetings

**from your new president!** There are a lot of members I know from our spring and fall meetings but, happily, each meeting brings us new faces, as well. I'd like to take a moment to introduce myself to those who don't know me and also thank the long-term members because it is from them that Becky and I have acquired much of our knowledge about bees and bee husbandry.

I am recently retired from the Goodyear Tire and Rubber Company, Topeka Plant, where I worked for 35 years. My wife of 40 years and I have two children, John and Julie and three grand children. We are both past presidents of the NE KS Beekeepers Association and have been active in this organization for many years.

It has been our privilege over the past few years to help Dr. Marion Ellis at his Midwest Master Beekeeper program at the University of Nebraska, Lincoln. We have also presented at EAS, ABF and Heartland Beekeepers Association meetings on various beekeeping topics and value-added workshops.

Our operation, Country Creek Honey, was started over 20 years ago with a beginning beekeeping kit purchased from Bluestem Farm and Home in Emporia, Kansas. We currently run 75-100 colonies producing most of the honey we sell at two farmers' markets in the Topeka area. Do you get the idea this might be a hobby that's way out of control? I still think of our bee business as a hobby/learning opportunity and a great way to meet new people also interested in beekeeping.

From talking with the general public, it quickly becomes apparent that there is a void in the knowledge about bees and their importance in our environment. Once it is known you are a beekeeper, the opportunity to talk about bees is almost endless. Church groups, garden clubs, school classes, scouts and 4-H, pre-school to senior citizens seem to love learning about the honey bee. I love sharing my love of bees.

The demographics of our organization have changed somewhat over the years moving from the focus on commercial side of beekeeping to the sideline and hobby beekeepers. The challenges to successful beekeeping have also changed dramatically even in the relatively short amount of time I have been a beekeeper. Varroa mites, small hive beetle, Nosema, colony collapse disorder and a host of viral diseases have all become stumbling blocks to good beekeeping. The Kansas Honey Producers' Association, through our spring and fall meetings, has provided a great way to keep informed on these critical topics. In addition, we've had excellent programs on how to successfully market your product, meeting all the state standards. From best practice to cutting edge technology, we've seen it at the KHPA meetings. I remember one of our past members, Waldo McBurnie, telling another beekeeper that he had never attended a bee meeting where he didn't learning something new. I believe Waldo kept bees about 70 years.

The beekeeping that is practiced in our part of the state (east) is not the same as in Colby and Dodge City. My goal is to help all beekeepers find the information that will enable each of us to be the best possible beekeeper for our area. Plan to come to our spring 2011 meeting to share the knowledge.

**Kansas Honey Producers Meeting  
Friday & Saturday, March 4 & 5 2011  
Holiday Inn Holidome, Topeka KS**

This year the spring meeting will be held in Topeka at the Holiday Inn Holidome located at 605 SW Fairlawn. The sleeping room rates are \$75.00. To make a reservation call 785-272-8040 and mention the Kansas Honey Producers to get this rate. Room reservations must be made by February 2<sup>nd</sup> to get this rate.

Since we are meeting in Topeka several state employees have been lined up to be on the program.

Our Special Guest Speaker will be Jamie Ellis, PhD who is an Assistant Professor of Entomology at the University of Florida in Gainesville. He is a part of the Honey Bee Research and Extension Laboratory and the Department of Entomology and Nematology.

**Food/Recipe Contest:** for this meeting Sharon Rowan has suggested that participant's make their favorite recipes using cherries and honey. As usual please bring about 40 copies of your recipe. They will be judged by all of the members after the business meeting on Friday afternoon.

**Thursday Night March 3<sup>rd</sup>, 8:30 p.m. Board Meeting, Board Room**

**Friday, March 4<sup>th</sup> Salon C General Session**

8:00-8:45 am Registration & Silent Auction Set Up

8:45-9:00 Welcome and Introductions, Steve Tipton President

9:00-9:50 Packaging and Labeling Requirements to ensure that the consumer receives the quantity stated on the labels, Kansas Department of Agriculture, Department of Weights and Measures, Maureen Henzler

9:50-10:40 **Keynote Address:** The Plight of the Honey Bee, Jamie Ellis

10:40-11:00 Break (Silent Auction Bidding continues)

11:00-12:00 Requeening and Making Spring Nucs, Q & A's welcome, presenters Jim Kellie, Cecil Sweeney and Steve Tipton

12:00-1:00 Lunch

1:00-1:30 Simply Kansas Trademark Program, Becky Rhodes

1:30-2:00 How to set up a successful Farmers Market or Craft Show Booth, Becky Rhodes

- 2:00-2:45 Licensing Requirements for your New Honey House, Adam Inman, Facility Licensing and Food Safety
- 2:45-3:10 Break & Silent Auction Bidding continues—bidding ends at the close of the break
- 3:10-4:00 Research Efforts at the UF Honey Bee Research and Extension Laboratory, Jamie Ellis
- 4:00 Business Meeting
- Immediately Following the Business Meeting—Judging of the Recipes featuring Cherries and Honey—See Above for details
- 6:00 **Buffet Dinner and Program** “Ramblings from a Bee Aficionado” presented by Jamie Ellis

**Saturday, March 5<sup>th</sup>, Salon C**

- 8:00-8:30 Registration & Silent Auction Set Up
- 8:30-8:45 Welcome & Introductions
- 8:45-9:40 To be announced
- 9:40-10:25 Honey Bees as Superorganisms, Jamie Ellis
- 10:25-10:55 Break Silent Auction Bidding continues
- 10:55-11-15 Schmied’s Trip to the 2011 North American Beekeeping Conference & Tradeshow, Tim Tucker, Robert Burns and Jim Kellie may pipe in and add their 2 cents worth!
- 11:15-11:35 2010 Scholarship Recipients Presentations, Wyatt Van De Pol & Bailey Wann
- 11:35-12:00 2011 Changes to the State Fair Honey Judging Competition, Kristi Sanderson Presents
- 12:00-1:00 Lunch
- 1:00 End of Silent Auction
- 1:00-1:45 Opportunities in Agritourism, presented by Darrel Zimmerman, Zimmerman Kill Creek Farms, Desoto KS
- 1:45-2:30 Gift Baskets –Tim Tucker has received the 1<sup>st</sup> Place award at the

National Beekeeping meetings many times—let's challenge him to teach us what he knows and encourage him and ourselves to enter in the State Fair contest

2:30-3:15 Small Scale Queen Rearing & Record-keeping with Excel, Robert Burns (as presented at the 2011 North American Beekeeping Conference & Tradeshow)

Program and speakers subject to change  
**Kansas Honey Producers Association, Spring 2011 Registration Form  
Friday & Saturday, March 4 & 5**

NAME \_\_\_\_\_

ADDRESS \_\_\_\_\_

CITY \_\_\_\_\_ STATE \_\_\_\_\_ ZIP+4 \_\_\_\_\_

COUNTY \_\_\_\_\_ PHONE \_\_\_\_\_ E-MAIL \_\_\_\_\_

—I wish to be contacted for swarm removal. —I wish to be contacted for bee removal.

**Pre-registration (must be sent in by February 25th):**

Per person (\$30.00 x \_\_\_\_\_) \_\_\_\_\_  
Per couple (husband, wife) \$50.00 \_\_\_\_\_  
**Children under 18 Free**

**Late Registration at the door:**

Per person (\$40.00 x \_\_\_\_\_) \_\_\_\_\_  
Per couple \$60.00 \_\_\_\_\_  
**Children under 18 free**

**Our wish is that all attendees who are non-members will join, however we welcome everyone to the meeting!**

**Membership for Kansas Honey Producers Association:**  Renewal  New \$15.00 \_\_\_\_\_

**Youth Membership 2011 KHPA** (18 years of age or under)  Renewal  New \$7.50 \_\_\_\_\_

**Membership 2011 Northeastern Kansas Beekeepers Assn:**  Renewal  New \$15.00 \_\_\_\_\_

**Friday Lunch** Chicken Fried Steak, Green salad, Green Beans, Mashed Potatoes, Apple Cobbler

Adult - \$14.00/person (\$14.00 x \_\_\_\_\_) \_\_\_\_\_  
Child - \$7.00/child (\$ 7.00 x \_\_\_\_\_) \_\_\_\_\_

**Friday Night Buffet & Program** Roast Pork Tenderloin, Baked Cod

Adult - \$23.00/person

(\$23.00 x \_\_\_\_\_) \_\_\_\_\_

Child - \$10.00/child

(\$ 10.00 x \_\_\_\_\_) \_\_\_\_\_

**Saturday Lunch Deli Buffet**

Adult - \$14.00/person

(\$14.00 x \_\_\_\_\_) \_\_\_\_\_

Child - \$7.00/child

(\$ 7.00 x \_\_\_\_\_) \_\_\_\_\_

**Donation for Youth Scholarship Project**

\$ \_\_\_\_\_

**Donation for the Queen Program**

\$ \_\_\_\_\_

**Total** \$ \_\_\_\_\_

Please make checks payable to: Kansas Honey Producers Assn or KHPA and mail to Robert Burns, 7601 W. 54<sup>th</sup> Terr., Shawnee Mission KS 66202913-831-6096 or email [rburns@kc.rr.com](mailto:rburns@kc.rr.com) (registrations not accepted by email)

**Youth Scholarships Awarded  
Mentors Needed**

The KHPA agreed to award three youth scholarships for the 2011 beekeeping season.

Summer Kingsley of Andover, Kansas: Summer is 13 and is home schooled. Summer writes that she is looking forward to learning about the effect bees have on the environment and sharing her information with others. We are still trying to secure a mentor for Summer.

Eric Beckman of Lindsborg, Kansas: Eric is 15. He writes that he raises chickens and enjoys gardening. He hopes to one day have enough hives to sell honey along with his other products. Darryl Boesker of Canton, Kansas has volunteered to mentor Eric during his first year of beekeeping

William Graham of Elbing, Kansas: William is 13, a straight "A" student and a cross-country runner. He became interested in bees after observing a swarm that took up residency in his church. Elbing, Kansas is near Newton—we still need a mentor for William, too.

If you'd like to mentor a scholarship student, now or in the future, please e-mail me at: [bstbees@embarqmail.com](mailto:bstbees@embarqmail.com). This program has helped many students get started in bees. Every mentor has had very positive comments about his/her

experience, too.

**Silent Auction to be held at  
KHPA Meeting**  
**As you do your January  
cleaning set aside items for the  
silent auction at the Spring  
meeting. One is held each day.**

**Australian Honey Bees  
Banned**

USDA APHIS will no longer allow import of adult honey bees from Australia (*Aphis mellifera*).

Attached is a State Plant Regulatory Official memo and Federal Order to prohibit importation of adult honey bees

(*Apis mellifera*) from Australia. This Federal Order, effective December 21, 2010, removes Australia from the list of approved regions for the importation of adult honey bees. This action is necessary because the Administrator has determined that the introduction and establishment of exotic bee diseases and/or parasites that may be associated with Australian bee species including *Apis cerana* pose a serious threat to the United States agriculture including almonds, apples, blueberries, and other crops grown in the United States

**Dean Krehbeil, via email**

**Wanted:**

The association is looking for someone to assume the responsibility of being webmaster for our website. This is a volunteer position. The web page was set up by Ron Ward. Robert Burns has all of the information. Contact Robert before the meeting so that we can discuss it at the board meeting. 913-831-6096 or [rburns@kc.rr.com](mailto:rburns@kc.rr.com)

**Dadant & Sons Beekeeping  
Supplies, Sioux City IA**  
Call Jim Raders 1318 11th St. P.O.  
Box 1735. **Sioux City, IA 51102.**  
TOLL FREE PHONE ORDER  
LINE ONLY - 1-877-7DADANT

## Winter & Spring Feeding Candy Boards & Liquid Feeding



At the last few meetings that we have attended the topics have all gotten around to feeding bees over the winter. Several years ago Steve Tipton started making candy boards to feed his bees. First you need to make a rim. To make the rim you rip a board 1 3/4". Cut it to the length when nailed together will sit on top of the hive body and then nail a piece of plywood on top. This will hold about 20 lbs. of the candy.

Steve gave the following recipe for making candy boards:

15 lbs sugar

4 cups water

3 lbs corn syrup

1/2 tsp cream of tartar

Cook and stir to 242°. Cool to 180 degrees. Beat in some air --stir until cloudy. Pour into mold. This will make a chunk of candy to fit the top of a super about 2" thick. (You really need a "candy board" mold to pour the candy into-- something exactly the size of the top super or smaller.)

Cecil has been using a recipe that is just a little different than Steve's following is his recipe:

10 cups of water

20 lbs. of sugar.

Boil to 243°F let it cool until it starts to get cloudy about 180°F and then stir it and pour it into your candy board rim.

**For Spring feeding  
To stimulate brood rearing and  
to feed package bees:**

You'll want to make sugar syrup that is

50% by weight sugar to 50% by weight water. For instance this would be 4 lbs. of sugar to 4 lbs. of water.

### **Wanted:**

**The association is looking for someone to assume the responsibility of editor. This is a volunteer position. The newsletter is a quarterly publication. Contact Steve Tipton, 785-484-3710 before the KHPA meeting so that we can discuss it at the board meeting.**

## **Mentors needed for two Scholarship Students**

Becky states that she needs two mentors for our next crop of Scholarship recipients. The students are located in Andover and Elbing. If you are interested in volunteering please call Becky at 785-484-3710. We really need some people in that part of the state to step up and say "I will!"

## ***Cherries to be theme for Spring Meeting Cooking Contest***



At our spring meeting our contest will be held Friday, March 4<sup>th</sup> in the afternoon, just after the business meeting. Your item may be any food category but must contain honey and cherries! Ymmmmm

## **DRAPER'S SUPER BEE**

**Specializing in:  
Beekeeping Supplies  
Containers  
Observation Hives**

Call for a free pollen sample & supply catalog (402) 274-3725

## ***-Changes Made to State Fair Honey Competition***

In a nutshell we have made the following changes—copies will be available at the KHPA meeting & Kristi Sanderson will go over and clarify any changes.

Please note that to enter your honey in the State Fair competition you must get your entry from in by approximately August 15<sup>th</sup>. We really want to encourage more people to enter their honey this year.

We are still working in some of the wording or I would have printed it here. The committee consisted of Ruth and Grace Schmied, Becky Tipton, Kristi Sanderson, Michael Sinclair and Joli Winer.

- ◆ Raised premiums, From \$10, 6, 4 to \$15,10,5
- ◆ Best of Show Youth & Adult from \$10-\$15
- ◆ Changed size & type of jar from 2 lb. Queenline glass and plastic to **1 lb. Queenline or Classic Glass only. We have taken out the plastic jars-as they are impossible to judge as you can't see through it with polariscope. Size and kind of jar has changed!**
- ◆ Added option of having your gift basket eligible to be entered in the Governor's Gift package with a chance to win \$150.00 if chosen and if you win you may, if available, present this to the Governor –
- ◆ Also to the gift package for the youth we added that they may not include alcoholic beverages to their package
- ◆ We added another statement that only 50% of your items may be non producer made. So if you make three items you can, if you

choose, have 3 items that you purchased.

- ◆ Fictitious labels must state the same as legal requirements for labeling
- ◆ A note card must be included in - your gift package stating the intended use and cost of package and if you want it to be considered in the Governor's gift package

If you have questions call Joli at 913-856-8356 or Kristi Sanderson at 913-768-4961. If you want a copy of what we submitted I can email it to you if you email me at

[joli@heartlandhoney.com](mailto:joli@heartlandhoney.com)

---

## **Winter Reading**

I love to read fiction and especially mysteries. As a follow up to last month's article on some winter reading – I've finished the book **Buzz Off, A Queen Bee Mystery** by Hannah Reed. It was definitely a 'cozy'. But I did enjoy it and am looking forward to her next book. The bee parts were accurate and I must say that some of her silliness would wind up in Buzz's Column!

Cecil read the **Sting of Justice, a Mystery of Medieval Ireland**, Cora Harrison and really liked that—in fact he stayed up late a couple of nights to finish it!

I've thought for years that I would like to compile a list of fictional books that have anything about bees in them but I never have done it—it you have read a book that relates to bees or beekeeping but is fictional if you would email it to me I will print it for others to read.

[joli@heartlandhoney.com](mailto:joli@heartlandhoney.com)



## In Memory of Robert Brown

### Robert Brown

1930 – 2010

Robert Irving Brown was born June 4 1920 in Red Wing, Minnesota, to Irving and Hazel (Eckstrom) Brown. He went to be with his Lord on November 7, 2010 in Belleville, Kansas.

He grew up in Red Wing where he attended the public School s and graduated in 1948. After high school he worked a few years in Red Wing for a Dodge Chrysler auto dealership. He then attended North Park College in Chicago, IL, earning a degree in Music education in 1953. It was at North Park College where he was the student choir director that he met the woman who was to be his wife of 56 years, Donna Joyce Adee. They were married on August 7, 1954 at Brantford Covenant Church in Clyde, Kansas. To this Union, three children were born, one girl, Cheryl and two boys Bruce and Jerry.

He soon knew that he missed having and active work life in the outdoors, so in 1963 they moved the family to Haddam, Kansas where he had been introduced to the beekeeping industry by his father-in-law, Vernon Adee. He formed Brown Honey Farms and found his work with the bees and honey to be fulfilling and rewarding. Besides beekeeping, he spent his spare time enjoying music.

Bob was active in state and National beekeeping organizations. He was a charter founder of the American Honey Producers Association and served on the Board of Directors for many years, Secretary-Treasurer, First Vice President and President of the Kansas Honey Producers Association, and served on the Nominations Committee of the National Honey Board.

He is survived by his wife Donna, Daughter Cheryl Miller and husband, Bill

of Manito Illinois, sons, Bruce and his wife, Irene of Concordia, Jerry and wife Debbie of Haddam, Granddaughter Britinna Packett and husband Levi, of Haddam, and grandsons, Spencer Brown and wife, Rio, of Concordia, and Nathan Brown of Haddam.



## In Memory of Ron Ward

Rarely am I at a loss for words. But in October one of our beekeeping family was tragically taken from us. Ron Ward was one of the most incredible volunteers and members we have ever had. Whatever Ron volunteered for was done in a very professional manner. He was such a treasure.

Life is so fragile—we just never know when our last moment on earth is. We sometimes get so busy in life that we forget to spend time with those that we love or say that we love them.

Ron was killed doing something he loved, flying an ultralight plane. He was passionate about many of his activities. For the Kansas Honey Producers, he was our webmaster and program chairperson. We could always count on him to be “in charge” of the PowerPoint projector and the sound system and the official picture taker! For their Leavenworth Farmers Market he was their webmaster too. Reading through his obituary he was involved in so many activities.

Our heartfelt condolences go out to his wife, Beth and their family and to all of us, his beekeeping family. We'll miss him greatly

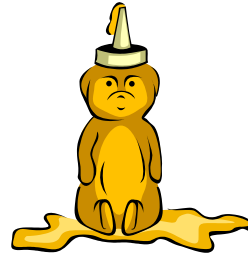
**The University of  
Nebraska will offer a Queen  
Rearing Workshop on June  
23-25, 2011.**

The workshop will be limited to 20 participants, and will include both classroom and in-the-apiary instruction. Lizette Dahlgren, Reed Johnson and Marion Ellis will be the trainers. The workshop will be hands-on with lots of repetition. After completing the training participants should expect to have the knowledge and practical skills needed to rear queens for their own use or to sell to other beekeepers. We will have Russian, New World Carnolian and Cordavon Italian breeder queens available, and participants can come back 10 days after the workshop to retrieve the queen cells they start. Registration is \$125 and includes meals, a workbook and the supplies needed for queen rearing.

**To register contact:**

Jeri Cunningham  
Department of Entomology  
University of Nebraska  
202 Entomology Hall  
Lincoln, NE 68583-0816  
jcunning@unlnotes.unl.edu  
402-472-8696

**Heartland Honey  
and Beekeeping  
Supplies**  
**19201 South Clare Road**  
**Spring Hill, Kansas 66061**  
**(913) 856-8356**  
**[www.heartlandhoney.com](http://www.heartlandhoney.com)**



**True Source  
Honey™ Launches Certified  
Honey Traceability Program  
To Protect Honey Consumers  
and Customers**

(Galveston, Texas January 11, 2011) The True Source Honey™ Initiative enthusiastically announces the launch of a Certified Honey Traceability Program beginning in January 2011. The program officially known as True Source Certified™ was unveiled at the 2011 North American Beekeeping Conference in Galveston this past week. Details were revealed regarding the program, which is designed to certify the origin of honey being distributed and consumed within North America, resulting in better food safety and product purity assurances for quality-minded customers and consumers. Further details of the program have been posted at [www.TrueSourceHoney.com](http://www.TrueSourceHoney.com).

**The True Source Honey Initiative** is an effort by a number of honey companies and importers to call attention to the problem of illegally sourced honey; to encourage action to protect consumers and customers from these practices; and to highlight and support legal, transparent and ethical sourcing. The initiative seeks to help maintain the reputation of honey as a high-quality, highly valued food and further sustain the U.S. honey sector. For more information, visit [www.TrueSourceHoney.com](http://www.TrueSourceHoney.com) and follow us on [Twitter](#) and at [Facebook](#).  
Information from the ABJ Extra

## South Central Beekeepers to hold 1<sup>st</sup> Meeting

Sunday, January 23<sup>rd</sup> 1-4:00

Pot Luck 1:00

Meeting 2:00-4:00

The first organized meeting of the South Central Beekeepers will be at the Milton Community Building in Milton, Kansas.

We will start our first meeting with a pot luck dinner. The meat and drink will be furnished. Please bring your own service, and a dish to add to the menu.

There's something about sharing a meal that makes for good conversation and a relaxed atmosphere. This makes it easier for us to accomplish one of our goals — for the south central group to get better acquainted.

If you can't come for the meal, please feel free to join us for the meeting that will start at approximately 2:00 p.m.

**Directions:** Milton is located just 2 miles south of Highway 42.

If coming from Wichita, come west on Edwards Avenue (Southwest Blvd) which is Highway 42. After Viola, will be Suppesville; there you turn south and go 2 miles.

If you are coming from the west, come south on Highway 14 until you reach the 42/14 intersection at Rago. Turn east and come to Suppesville. Turn south and go 2 miles.

If you need further directions, call Jim or Sharon at 620-478-2210

*Submitted by Sharon Roman*



## 2011 Northeastern Beekeeper's Meeting Dates

- **Monday, February 7<sup>th</sup> 7:00 pm,** Leavenworth Public Library 417 Spruce St.
- **March Beginning Beekeeper Class, Saturday, March 19<sup>th</sup>, 2011 8:00-5:30, Matt Ross Community Center, 8101 Marty, Overland Park KS 66204**
- **Monday, April 4<sup>th</sup>** place to be determined
- **Monday, May 2<sup>nd</sup>** place to be determined
- **Saturday, June 4<sup>th</sup> Funday,** Douglas Co Fairgrounds, Dewey Caron guest
- **Monday, July 11<sup>th</sup> (2nd Monday) 7:00 p.m.,** Johnson Co Extension Office Sunset Drive Office Bldg., Room 1055 11811 S Sunset Drive, Olathe, KS 66061
- **Sunday, August 28<sup>th</sup>** Bee Bee Que and tour of Chip Taylors nectar & pollinator garden KU campus
- **Monday, October 3<sup>rd</sup>, 7:00 pm,** Johnson Co Extension Office, Sunset Drive Office Bldg., Room 1055, 11811 S Sunset Drive, Olathe, KS 66061
- **Monday, November 7<sup>th</sup> 7:00 pm,** Johnson Co Extension Office, Sunset Drive Office Bldg., Room 1055, 11811 S Sunset Drive, Olathe, KS 66061
- **Monday, December 5<sup>th</sup> 7:00 pm,** Johnson Co Extension Office, Sunset Drive Office Bldg., Room 1055 11811 S Sunset Drive, Olathe, KS 66061

**In the case of an ice storm or a snow storm it is your responsibility to call Cecil Sweeney at 913-856-8356 or Steve Tipton at 785-484-3710 to find out if the meeting is cancelled—**